

SHOP TIPS

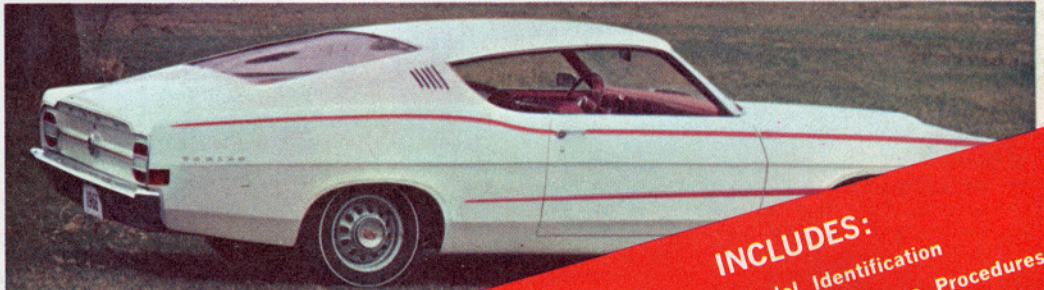
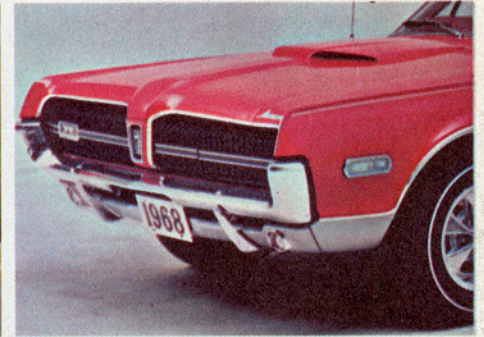
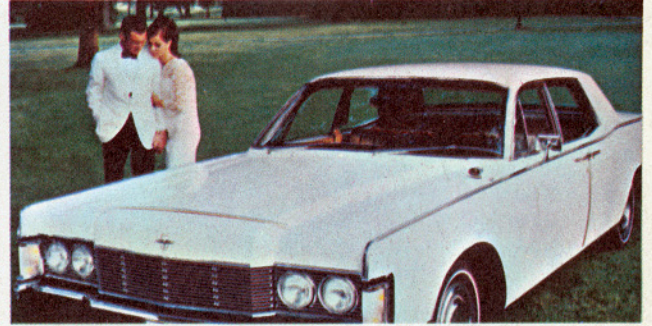
FROM

Autolite



VOL. 6, NO. 1

SEPTEMBER, 1967



1968 ANNOUNCEMENT ISSUE

- INCLUDES:**
- Specifications
 - Model Identification
 - Maintenance Schedules
 - Service Procedures



FORD TRUCKS

1968 Models &

Ford F-250



Ford F-100



Ford F-350



Ford Parcel Delivery



ENGINES

	240 CID SIX	300 CID SIX	360 CID V-8	390 CID V-8
Bore (inches)	4.00	4.00	4.00	4.05
Stroke (inches)	3.18	3.98	3.50	3.786
Taxable (SAE) Horsepower	38.4	38.4	52.49	52.49
Max. Gross Horsepower (bhp rpm)	150 @ 4000	170 @ 14-3600	215 @ 4400	255 @ 4400
Max. Gross Torque (ft.-lbs. @ rpm)	234 @ 2200	283 @ 14-2400	327 @ 2400	376 @ 2600
Compression Ratio	9.2:1	8.4:1	8.4:1	8.6:1
Compression Pressure (1) (psi at cranking speed)	150-200	150-200	120-160	120-160
Idle Speed RPM (2)				
Manual Transmission				
Non-Thermactor	525	525	—	—
Thermactor	600	600	625	625
Automatic Transmission (In Drive)				
Non-IMCO	500	500	—	—
IMCO	500	500	550	550
Oil Pressure—Hot (psi @ 2000 rpm)	35-55	35-60	35-55	35-55
Cylinder Firing Order	1-5-3-6-2-4	1-5-3-6-2-4	1-5-4-2-6-3-7-8	1-5-4-2-6-3-7-8
Spark Plugs	BTF-42	BTF-42	BF-32	BF-32
Spark Plug Gap	.032"-.036"	.032"-.036"	.032"-.036"	.032"-.036"
Distributor Point Gap				
Thermactor or IMCO	0.027"	0.027"	0.021"	0.021"
Non-Thermactor or Non-IMCO	0.025"	0.025"	0.017"	0.017"
Ignition Timing (3) (4)				
Non-Thermactor or IMCO	6°	6°	10°	10°
Manual Transmission	10°	10°	10°	10°
Automatic Transmission	6°	6°	6°	6°
Thermactor or IMCO				

(1) Allowable tolerance between cylinders 20 psi. (2) All idle speeds are adjusted with the headlights on, automatic transmissions in drive, and the air conditioner operating at maximum cooling. (3) When checking and/or adjusting initial ignition setting, engine idle speed must be below 600 rpm and distributor vacuum hoses must be disconnected at the distributor. Plug manifold vacuum hose, if so equipped. (4) If requirements or the use of sub-standard fuels dictate, initial timing may have to be retarded to prevent detonation. Retard progressively, but do not exceed 2° BTDC.

FORD DIESEL ENGINE

Engine	4-Cylinder 242
Bore (inches)	4.125
Stroke (inches)	4.516
Displacement (cubic inches)	242
Taxable (SAE) Horsepower	28.8
Horsepower @ rpm—	
Net	74 @ 2800
Gross	82.5 @ 2800
Maximum Torque (ft.-lb. @ rpm)	
Net	178 @ 1700
Gross	186 @ 1700
Compression Ratio	16.5:1
Compression Pressure	363 psi @ 215
Maximum Engine rpm	
(No Load)	3090
(Loaded)	2800
Idle Speed (rpm @ Neutral) Hot	500-550
Valve Lash Hot (inches)	
Intake	.015
Exhaust	.012
Oil Pressure Hot (psi)	45-55
Cylinder Firing Order	1-2-4-3
Air Cleaner—Type	Oil Bath
Injection System	
Injector Nozzle Opening Pressure psi	2600-2700
Injector Pump Timing	22° BTDC

Specifications

SERIES 100 THRU 350, AND P SERIES

FORD TRUCKS

APPROXIMATE REFILL CAPACITIES

(U.S. Measure)

COOLING

(Add 1 quart for trucks equipped with heater)

Engine	Truck Model	Quarts
240 CID	F-100 and F-250—4 x 2 (Standard)	13
240 CID	F-100 and F-250—4 x 2 RPO F-100 and F-250—4 x 4, and F-350 Single Rim Rear Wheels	14
240 CID	F-350 Double Rim Rear Wheels	18
240 CID	P-350, P-400, P-500	19
300 CID	F-100 and F-250—4 x 2 (Standard)	13
300 CID	F-100 and F-250—4 x 2 RPO F-100 and F-250—4 x 4, and F-350 Single Rim Rear Wheels	14
300 CID	F-350 Double Rim Rear Wheels	18
300 CID	P-350, P-400, P-500	19
360 CID	F-100, F-250, F-350 Single Rim Rear Wheels	21
390 CID	F-350 Double Rim Rear Wheels	24
242 CID DIESEL	P-3500, P-4000, P-5000	17

CRANKCASE

(Add 1 quart for filter)

Engine	Quarts
240 CID 6 Cyl.	4
240 CID 6 Cyl. (4 x 4, F-350 and P-Series)	5
300 CID 6 Cyl.	5
360 CID V-8	5
390 CID V-8	5
242 CID DIESEL (Add 1½ pints for full-flow filter)	8

REAR AXLE

Rear Axle Model	Truck Model	Pints
Ford 3300	F-100, P-100	4½
(t) Spicer 43	F-100 (Limited Slip)	4½
(t) Spicer 44F (front axle)	4-Wheel Drive (F-100, F-250)	3¼*
(t) Spicer 44F HD (front axle)	4-Wheel Drive (F-250)	3¼**
(t) Spicer 60-3	F-100	6
(t) Spicer 60	F-100, P-350, P-3500	6
(t) Spicer 70	F-350, P-350, P-3500, P-400, P-4000	6
Rockwell C-100-N	P-500, P-5000	15
Rockwell D-100-N	P-500	15

*Add ½ pint for each steering knuckle. **Add 1 pint for each steering knuckle.
(t) Dana

FUEL TANK

Tank Type	Truck Model	Gallons
Standard	F-Series (Cab Models)	19.5
Standard	F-100, 250 Chassis Windshield, P-Series Chassis, F-350 Series Cowl or Chassis-Windshield Models	17
Optional (mounted outside or frame mounted)	P-350/500	30
Optional (mounted outside or frame mounted)	F-100/350	25

TRANSMISSION

Transmission Type and Make	Pints
3-Speed (Ford)	3½
3-Speed w/Overdrive (Warner T-85-N)	4
3-Speed Medium Duty (Warner T-89-F)	3¾
3-Speed Heavy Duty (Warner T-87-G)	5½
4-Speed (Warner T-18 and T-98-A)	6½
4-Speed (New Process 435)	6½
HD Cruise-O-Matic	22
C-4 Automatic	20½
4-Wheel Drive Transfer Case Single Speed F-100	1¼
4-Wheel Drive Transfer Case 2-Speed F-250	4½

CIRCUIT PROTECTION

Circuit	Protective Device	Location
F-100, F-250, F-350 Series Cargo Lamp, Dome Light, Windshield Washer	SFE-14 Fuse	Fuse Panel
Emergency Warning System	AGX-20 Fuse	Fuse Panel
Headlamps	Circuit Breaker	Integral w/Headlamp Switch
Heater	SFE-20 Fuse	Fuse Panel
Instrument Panel Lights	1-AG or AGA-2 Fuse	Fuse Panel
License Light	Circuit Breaker	Integral w/Headlamp Switch
Lighter	AGW-15 Fuse	Internal
Marker Lights	Circuit Breaker	Fuse Panel
Overdrive Circuit	15-AG Fuse	Clip on O/D Relay
Radio	SFE-14 Fuse	Fuse Panel
Spotlight	SFE-7.5 Fuse	Cartridge in Feed Wire
Stop Lamp	Circuit Breaker	Integral w/Headlamp Switch
Turn Signal Lights	SFE-14 Fuse	Fuse Panel
Windshield Wiper	Circuit Breaker	Integral w/Headlamp Switch
P-Series Emergency Warning System	SFE-14 Fuse	Cartridge in Feed Wire
Headlamps	Circuit Breaker	Integral w/Headlamp Switch
Heater	SFE-14 Fuse	Cartridge in Feed Wire
Instrument Panel Lights	1-AG Fuse	Cartridge in Feed Wire
License Lamp	Circuit Breaker	Integral w/Headlamp Switch
Parking Lamps	Circuit Breaker	Integral w/Headlamp Switch
Stop Lamp	Circuit Breaker	Integral w/Headlamp Switch
Turn Signal Lights	10-AGC Fuse	Cartridge in Feed Wire
Windshield Wiper	Circuit Breaker	Integral w/Headlamp Switch

LIGHTS (12 VOLTS)

Description	Candle Power or Wattage	Lamp Number
Cigarette Lighter Socket	1.5 c.p.	1445
Dome Light	1.5 c.p.	1004
Front Parking Only	4 c.p.	97
Front Turn Signal/Parking	4-32 c.p.	1157
Front or Rear Turn Signals Only	32 c.p.	1156
Alternator Indicator	2 c.p.	1895
Headlights Single—High/Low Beam	50/40 Watts	6012
Instrument Cluster Illumination	2 c.p.	1895
Instrument Panel Indicators—Hi-Beam	2 c.p.	1895
Marker	4 c.p.	97
Oil Pressure	2 c.p.	1895
Radio Dial	2 c.p.	1895
Rear License Light Only	4 c.p.	97
Rear Turn Signal & Stop/Tail	4-32 c.p.	1157
Spotlight	30 Watts	4435
Turn Signal Indicator	2 c.p.	1895
Brake Warning Light	1.5 c.p.	1445